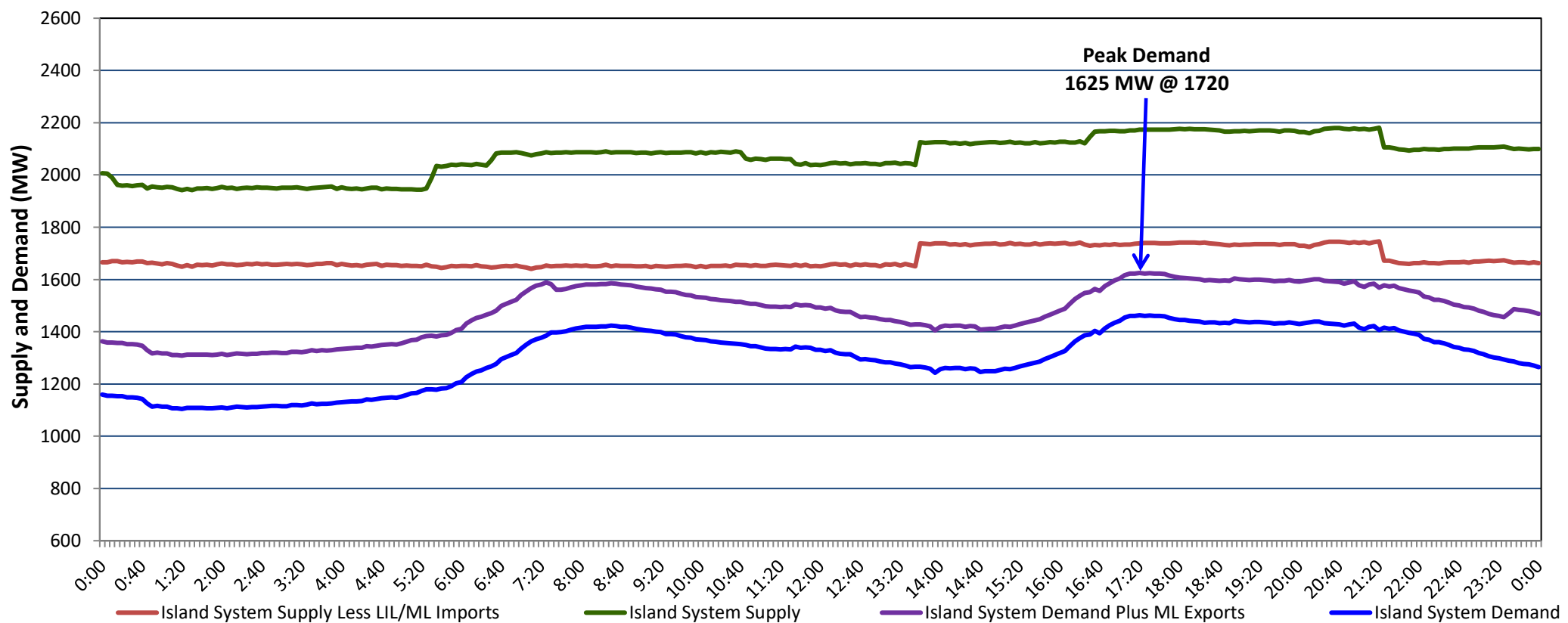


Newfoundland Labrador Hydro (NLH) Supply and Demand Status Report Filed Wednesday, January 10, 2024

Section 1 Island Interconnected System Supply, Demand & Exports Actual 24 Hour System Performance For Tuesday, January 09, 2024



Supply Notes For January 09, 2024

1,2

- A As of 0800 hours, May 21, 2023, Holyrood Unit 2 unavailable due to forced extension to planned outage (170 MW).
 B As of 2059 hours, July 13, 2023, Stephenville Gas Turbine unavailable (50 MW).
 C As of 0714 hours, January 08, 2024, Holyrood Unit 1 available at 160 MW (170 MW).
 D At 1335 hours, January 09, 2024, Upper Salmon Unit available (84 MW).
 E At 2122 hours, January 09, 2023, Holyrood Unit 3 unavailable due to planned outage 70 MW (150 MW).

Section 2 Island Interconnected Supply and Demand

| Wed, Jan 10, 2024 | Island System Outlook ³ | | Seven-Day Forecast | | Temperature (°C) | | Island System Daily Peak Demand (MW) | |
|--|------------------------------------|--------|-----------------------------|----|------------------|---------|--------------------------------------|-----------------------|
| | | | | | Morning | Evening | Forecast | Adjusted ⁷ |
| Available Island System Supply: ⁵ | 2,064 | MW | Wednesday, January 10, 2024 | -9 | -7 | 1,735 | 1,635 | |
| NLH Island Generation: ^{4,8} | 1,315 | MW | Thursday, January 11, 2024 | 0 | 2 | 1,400 | 1,304 | |
| NLH Island Power Purchases: ⁶ | 100 | MW | Friday, January 12, 2024 | 0 | 0 | 1,290 | 1,195 | |
| Other Island Generation: | 220 | MW | Saturday, January 13, 2024 | -4 | -4 | 1,325 | 1,230 | |
| ML/LIL Imports: | 429 | MW | Sunday, January 14, 2024 | -1 | 0 | 1,310 | 1,215 | |
| Current St. John's Temperature & Windchill: | -9 °C | -14 °C | Monday, January 15, 2024 | -4 | -5 | 1,450 | 1,353 | |
| 7-Day Island Peak Demand Forecast: | 1,735 | MW | Tuesday, January 16, 2024 | -1 | -2 | 1,390 | 1,294 | |

Supply Notes For January 10, 2024

3

- Notes:
1. Generation outages for running and corrective maintenance are included. These are not unusual for power system operations. They generally do not impact customer supply. The power system operators schedule outages to system equipment whenever possible to coincide with periods when customer demands are low and sufficient supply reserves are available. However, from time to time equipment outages are necessary and reserves may be impacted.
 2. Due to the Island system having no synchronous connections to the larger North American grid, when there is a sudden loss of large generating units there may be a requirement for some customer's load to be interrupted for short periods to bring generation output equal to customer demand. This automatic action of power system protection, referred to as under frequency load shedding (UFLS), is necessary to ensure the integrity and reliability of system equipment. Under frequency events have typically occurred 5 to 8 times per year on the Island Interconnected System and the resultant customer load interruptions are generally less than 30 minutes. With the activation of the Maritime Link frequency controller during the winter of 2018, UFLS events have occurred less frequently.
 3. As of 0800 Hours.
 4. Gross output including station service at Holyrood (24.5 MW) and improved NLH hydraulic output due to water levels (35 MW).
 5. Gross output from all Island sources (including Note 4).
 6. NLH Island Power Purchases include: CBPP Co-Gen, Nalcor Exploits, Rattle Brook, Star Lake, Wind Generation and capacity assistance (when applicable).
 7. Adjusted for curtailable load, market activities and the impact of voltage reduction when applicable.
 8. Due to limitations inherent in the design of combustion turbines, the output of combustion turbines may be reduced in the event that ambient temperatures exceed the threshold

Section 3 Island Peak Demand Information Previous Day Actual Peak and Current Day Forecast Peak

| | | | |
|-------------------|--|-------|----------|
| Tue, Jan 09, 2024 | Actual Island Peak Demand ⁹ | 17:20 | 1,625 MW |
| Wed, Jan 10, 2024 | Forecast Island Peak Demand | | 1,735 MW |

- Notes: 9. Island Demand / LIL / ML Exports (where applicable) is supplied by NLH generation and purchases, plus generation owned and operated by Newfoundland Power and Corner Brook Pulp & Paper (Deer Lake Power, DLP).